

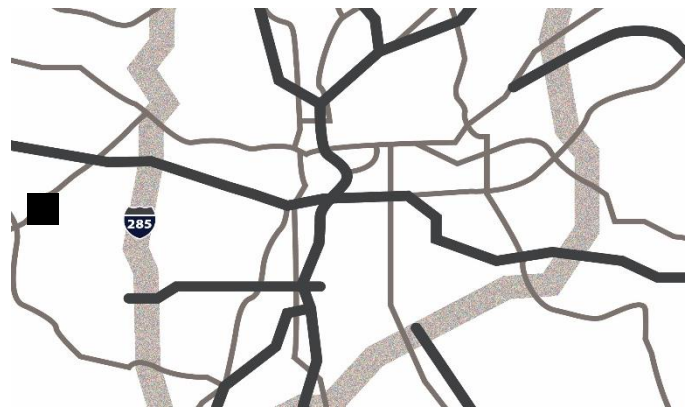


## 200 Great Southwest Parkway, Atlanta, GA

### Opportunity

- 25,980 SF available
- 5,661SF office space
- 25,980 total building size
- 19' clear height
- 48'8 x 50' Columns
- Doors - 3(10'x12') DH with 1 (40') concrete ramp, 2(10'x10') Rail
- Sprinklered System
- Fenced truck court

### Location



15 Miles to Airport



15 Miles to I-75



8 Miles to I-285

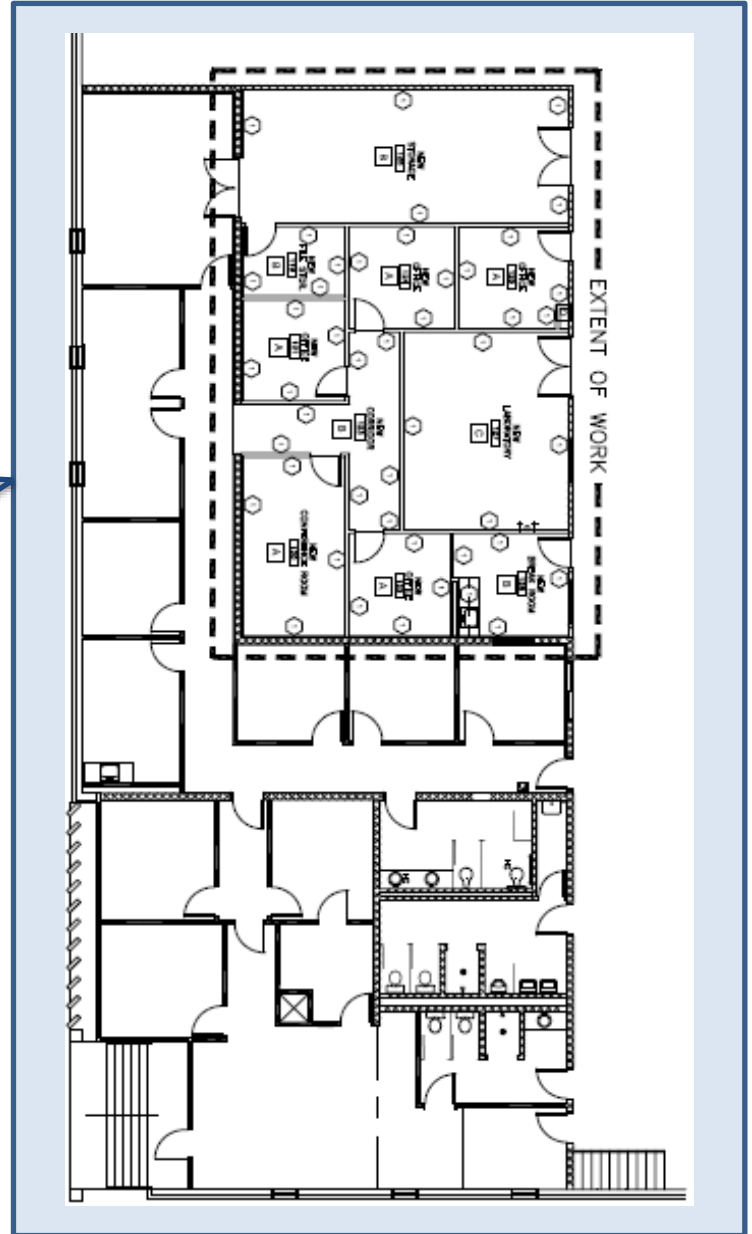
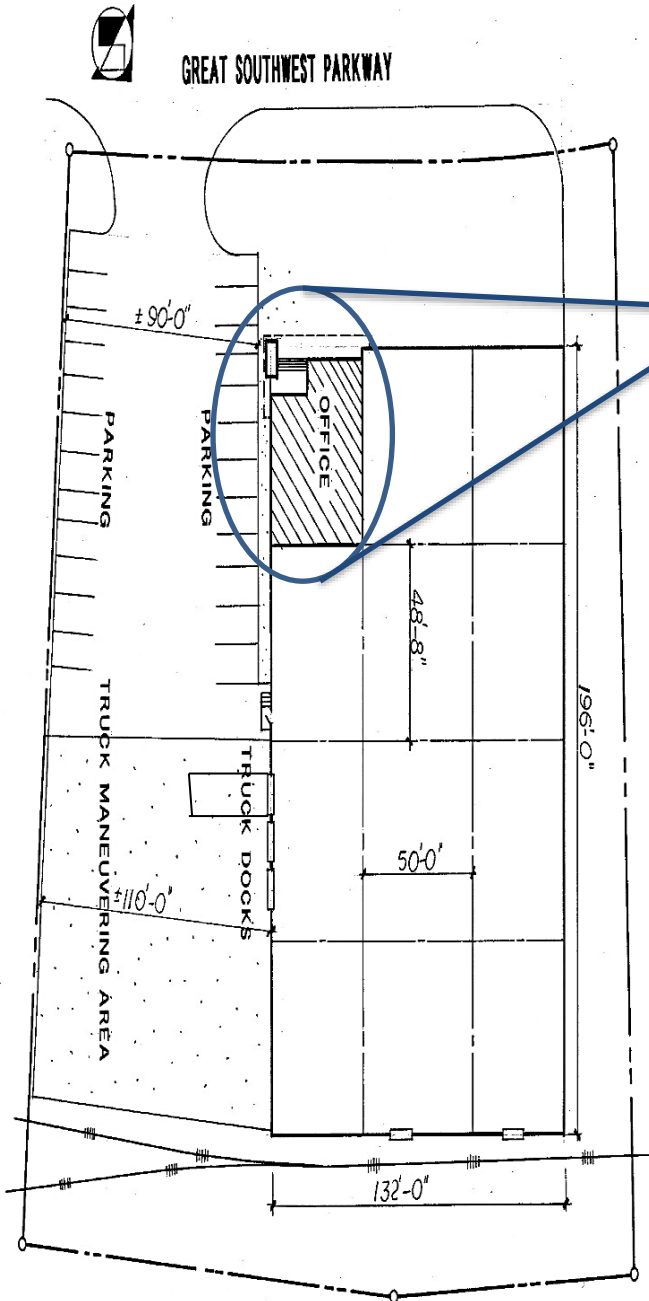
**For further  
information**

**Bruce Logue**  
Principal  
+1 770 916 6150

[avisonyoung.com](http://avisonyoung.com)

# Industrial For Lease

200 Great Southwest Parkway, Atlanta, GA



For further information



**Bruce Logue**  
Principal  
+1 770 916 6150  
bruce.logue@avisonyoung.com

Owned by:

